



*Derek Farquharson, Chairman of the Accreditation Panel and John Williams, Chairman of the Hertfordshire Association of Parish and Town Councils presenting the Quality Status Award to Tony Bull, Chairman, Redbourn Parish Council.*

## QUALITY STATUS

Redbourn Parish Council is pleased to announce that it is the first Parish Council in Hertfordshire to be awarded Quality Status. The award demonstrates that it has met the standards expected of an effective, representative and active Parish Council.

## SAVE OUR GREEN BELT

It is vitally important that you respond to the Government's Consultation on proposals that will change the face of Hertfordshire forever. At least 83,200 houses are proposed for Hertfordshire, approximately 6000 of these on Green Belt land between Hemel Hempstead and Redbourn. This totally ignores the tenets of Green Belt Policy to prevent the coalescence of communities. There is a strong possibility that the Government will ignore the objections of the Eastern Regional Assembly, Hertfordshire County Council, local District Councils and Town and Parish Councils and railroad these proposals through. We must make a stand for our democratic rights. Respond to the Secretary of State's proposed changes to East of England Plan quoting sound planning reasons for objections such as:

- Congestion: (our roads are already heavily congested and become gridlocked when there is an accident on the M1)
- Water shortages: more water is being abstracted than is being recharged leading to the death of our precious chalk streams (including the River Ver)
- Pollution: Hertfordshire has the largest car ownership in the Country more houses means more cars and more pollution
- Schools: parents have difficulty finding school placements now
- Hospitals: services being reduced at Hemel Hempstead Hospital
- Detrimental effect on quality of life
- Coalescence of communities leading to loss of identity
- Insufficient thought given to impact of Luton Airport expansion on adjacent communities
- Insufficient thought given to impact of housing development in Luton and Dunstable

Write to John Chapman, Planning Policy Manager, St Albans City & District Council, St Peter's Street, St Albans, AL1 3JE by 2nd March, and ask him to send a copy of your letter to "Go East", and/or send a copy direct to Mr M Hargreaves, Head of Regional Planning, Government Office for East of England, Eastbrook, Shaftesbury Road, Cambridge, CB2 8DF

For more information visit the village website [www.redbourn.org.uk](http://www.redbourn.org.uk). Here you can view Council agendas and minutes and send your comments. The website is full of useful information about life in the village. It includes advice about clubs and societies, local birdlife, walks, events, history and so much more. If you wish you can attend our meetings, which are held on the third Thursday of the month at 7.30pm in the Village Hall. (December's meeting is held on the second Thursday of the month). Meetings of the Common Footpaths and Open Spaces are held on the first Thursday of the month.

# NEIGHBOURHOOD WATCH IN REDBOURN ARE YOU UP FOR IT?

Neighbourhood Watch or NHW is commonly perceived by many as a collection of curtain twitchers! What good is it? What can it do for me? Do I need it? Well, of course, curtains might twitch; certainly we want people to be vigilant for what is going on in the world of crime where they live. After all, the effects of crime and anti-social behaviour impinge on the lives of all of us, one way or another.

Of the 100 or so streets in and around the village, only half of them have formed their own Watch and of these there will be varying degrees of activity and success. Of course, it is up to the members of each Watch to decide how active or proactive and interested they want to be, but the very fact that they have bothered to band together in a positive way and advertise their existence can, in itself, help to deter the bad intentions of others. And it does help to reduce crime.

As the Redbourn Ward Coordinator and a street coordinator myself, I know that it doesn't have to be onerous for any individual; not even those who act as coordinators. So if you are interested in starting a Watch in your street and you think that your neighbours would like to be involved, we can help get you going and give you support. Just contact me via the options below and we can discuss the way forward.

Some Watches have become a little inactive, perhaps through lack of communication or ongoing support. If that applies to you, we would like to help give your Watch a boost. Perhaps you have no access to email - a fast and effective means of communication and one which we use to pass on warning messages and notices of our various activities. If you are without access to email, but know of one or more neighbours who could receive and help distribute information sent in this way then, with their consent, let me have their details so that we can give better coverage to the whole village.

Contact me Barry Welch, email: [barrywelch@ntlworld.com](mailto:barrywelch@ntlworld.com) or telephone 01582 626 443  
Alternatively you could contact our Police Community Support Officer Alison Dewar on 07845 219 523 when on duty, or leave a message; or the police Watch Liaison Officer on 01727 796 087 or [ken.lane@herts.pnn.police.uk](mailto:ken.lane@herts.pnn.police.uk)

**GO ON GIVE IT A GO!!**



Scouting worldwide is celebrating its Centenary this year. From small beginnings in 1907 it has now grown to an organisation with approximately 28 million members in 218 countries throughout the world.

Redbourn Scout Group has been going for nearly 80 years and a great many people in the village have been active in its achievements during that time. One aspect perhaps now more than ever is that there is no shortage of young people wanting to join - in fact we have a waiting list of twenty six year old boys and girls who are ready and eager to join in the game of Scouting. What we are short of is leaders and helpers.

If you are able to give something back to Scouting we would be pleased to hear from you. If you do not have the time or commitment to help out as an adult leader there are plenty of other jobs within the Scout Group that could be undertaken at a time to suit yourselves. Please don't leave it to someone else.

2007 will be a year to remember for Redbourn Scouts - and with your help and support it could be even better!

Interested? Find out more by contacting either:

Pieter France, Group Scout Leader and Scout Leader: 01582 433415  
Tracey Berry, Beaver Scout Leader: 01582 793349  
Trevor Hall, Cub Scout Leader: 01582 794679  
Geoff Woodhouse, Committee member: 01582 792668

## REDBOURN RECREATION CENTRE

(Registered Charity No 1111215)

5 Dunstable Road, Redbourn, AL3 7PP

### OPEN DAY

Sunday 25th March

11 am to 4 pm

We've passed the 11+!



Redbourn Care Group  
Registered charity 297955

Come and help us celebrate our eleventh year, and see what is on offer at **your** local Recreation Centre. "Come and Try" sessions, displays and information about all the activities available. **FREE** publicity stands or fund-raising stalls for Redbourn organisations; display of local sporting memorabilia; children's painting competition: "Sport and Recreation in Redbourn"; Guess Who" competition (please supply current photo and one as a baby or toddler open to Redbourn residents and anyone involved with a Redbourn organisation or group using the Centre)

Please submit items for any of the above **AT LEAST** one week in advance, labelled with your name, address, telephone number and e-mail (for the paintings) to the Centre

Face Painting                      B a r                      Refreshments

To book a stall, or for further information,  
please ring the Centre on 01582 626202

If you are in need of help please contact the Care Group.

The Care Group is a local voluntary organisation which can help with collecting prescriptions, library books, and shopping. It can arrange voluntary private transport to hospitals, doctors, surgeries, dentists, opticians, and clinics. It provides a minibus for transport to shops, Clubs, and Day Centres.

The Care Group Office (Tel. No. 01582 794550) is in the Village Hall. Opening hours are 9:30 to 12 noon Mondays to Fridays.

We also welcome new volunteers who can spare a few hours every month.

## HERTS THEATRE CLUB

Annual Membership £22 single, £35 per couple or two for the same address.

Excursions 4 times a month to theatres, day trips, places of interest and events. We also organise four holidays a year.

Coach pick up from Redbourn Fire Station.

Information and programme available from Marian Durbidge  
25 Stewart Road, Harpenden Herts AL5 4QE, 01582 469338,  
marian@htclub.co.uk www.htclub.co.uk

## PUBLIC MEETING ON GREEN BELT

There was standing room only at the public meeting on 6th December when District Councillors and Officers presented proposals to build on the Green Belt between Hemel Hempstead and Redbourn. The District Council agreed to write to every household in the village, informing them of the proposals and giving them an opportunity to inform both St Albans District Council and Dacorum Borough Council of their views. Although the consultation deadline has passed there is still time to respond to the East of England Plan (see page 1)

## PARKING ON PAVEMENTS

A little thought on where you park your car could help prevent accidents.

Remember that if you park on the pavement you may be preventing access for a parent with children, forcing them to walk onto the road and into a potentially dangerous situation. Do not block driveways or park in such a manner that would prevent access for emergency vehicles. This is a particular problem in Pondsmeade where vehicles regularly block the access. Remember, your five minute trip to the shops could be life threatening if it prevents emergency treatment for some poor soul.

Do not park on blind bends. This puts motorists overtaking your parked car in potential danger if they cannot see oncoming traffic. There have been a number of reported near misses particularly in Lamb Lane.

If you spot a car which has been parked in a dangerous manner please inform the Parish Council of the registration number.

## ANNUAL PARISH MEETING

The Annual Parish meeting is to be held on 26th April 2006 at 7.30 pm in the Village Hall. Your opportunity to find out what the Parish Council has achieved over the past year. Refreshments will be served after the meeting.

## FOOTPATHS ON THE COMMON

The Parish Council is considering postponing the construction of the new footpath alongside Chequer Lane. Representations have been received from members of the public concerning the state of the footpath on North Common and councillors have decided that the existing footpaths should be brought up to an acceptable standard before embarking on constructing new footpaths. This matter will be discussed at the Annual Parish Meeting (see above).

## NAME THAT GARDEN!

We are launching a competition to find a suitable name for the garden off the High Street (formerly Cumberland House garden). Please forward your suggestions to The Clerk. The winning name will be announced at the Annual Parish Meeting on 26th April 2007.

## DATES for your DIARY

\*\*\*

Monday Club for the over 60's

St Mary's Transept 2 to 4pm - friendly atmosphere,  
Light refreshments served (Transport available)

Contact: David Viollet, 01582 712097

\*\*\*

Thursday Pop-In

Village Hall - 9.30 to 11.30 - Tea Coffee & Biscuits  
Stalls: Plants, Books, Cards, Bric-a-Brac

\*\*\*

30th March - Redbourn Museum AGM 7 pm  
refreshments 7.30pm

followed by Presentation on life of Henry Stevens

\*\*\*

17th April - Redbourn in Bloom talk on The  
Edible Flower Garden

\*\*\*

26th April - Annual Parish Meeting  
Village Hall, Redbourn

\*\*\*

9th June - Redbourn in Bloom  
Day trip to Coton Manor and Gardens

\*\*\*

## YOUR REPRESENTATIVES

### Beaumont Ward

◆  
Christine Cardy

16 Cumberland Drive 01582 794744

◆  
James Lowen (Chairman Finance)

2 Mulberry Place - 01582 794039

◆  
Maria Maynard

2 High Street

◆  
Colin O'Donovan (Chairman Commons)

7 Ver Road - 01582 792382

◆  
Ron Stent

10 Saberton Close - 01582 793151

◆  
Tony Swendell

6 Monks Close - 01582 792076

◆◆◆

### Nicholls Ward

◆  
Anthony Bull (Chairman)

10 Crouch Hall Gardens - 01582 793756

◆  
Kevin Maidment

Scout Farmhouse, Dunstable Road - 01582 794259

◆  
Stan Pierpoint

4 Wheatlock Mead - 01582 792117

◆  
Philip Rosen (Chairman Planning)

1 Pondsmeade - 01582 792585

◆  
Pat Schofield

82 The Park - 01582 793096

◆  
Vivienne Windle

1 Coopers Meadow - 01582 626351

◆◆◆

### Parish Clerk

Diane Whiskin

Village Hall, 63 High Street Redbourn AL3 7LW  
01582 794832

◆◆◆

### District Councillors

Colin O'Donovan, Tony Swendell  
(Addresses etc. as above)

Susan Carr

103 Dunstable Road - 01582 794475

◆

### County Councillor

Derek Hills

01582 629433

◆

### Member of Parliament

Rt Hon Peter Lilley

01582 834344

◆◆◆

It is intended that REDBOURN news will be printed quarterly. If there are any subjects you would like to see in the newsletter or if you have an article/letter you would like published please write to the Parish Clerk Diane Whiskin, or e-mail redbournpc@talk21.com

## **NICKY LINE**

The County Council has granted Balfour Beatty Skanska an easement to lay an underground storm water drain from the widened M1 along the Nickey Line. A section of the Nickey Line is to be closed for a couple of months and a large number of trees and vegetation will be cleared behind houses in Hemel Hempstead Road and Chequer Lane, in order for machinery to gain access. The alternative route for the drain is along the Redbourn by-pass which would require the road to be reduced to a single carriageway for a period of nine months.

County recognises that the works will have a significant initial visual impact. However, the felled trees will be replaced by hedging plants and County is of the opinion that once these have matured the vegetation should have a beneficial environmental impact. The contractors are required to lay an improved surface on this length of the Nickey Line.

The County Council's Rural Estates Unit are negotiating with the contractors to ensure disruption to the public and wildlife habitat is kept to a minimum.

The Rural Estates' Forestry Team propose to process any suitable felled trees for use elsewhere on the Estate.

## **REDBOURN FIREWORK DISPLAY**

Many thanks to everyone who attended the Firework Display on 4th November and to the very many volunteers who helped to make the evening such a success.

The Firework Working Party was able to make the following awards from the profits on the night:

£100 to Good Companions, Redbourn Care Group, Redbourn Day Care Centre, Redbourn Museum, Tiddlywinks, Thursday Pop In, Redbourn in Bloom, Redbourn Junior School, Redbourn Infant School, £50 to Redbourn Scouts and Redbourn Brownies and £500 to the Recreation Centre to be used towards training staff to work on the Holiday Play Scheme.

We would be pleased to hear from anyone interested in joining the Working Party to help with the organisation of the display, or anyone available to assist on the day.

## **PARISH COUNCIL ELECTIONS**

To retain Quality Status we must ensure that at least twelve people stand for Parish Council elections in May. Are you interested in becoming involved in the local community. If so, why not consider standing as a Parish Councillor. We need people who are prepared to get involved in the local community and help us to improve the facilities for the village. Talk to a councillor (see page 4 for telephone numbers) about what this involves. Nominations must be in by noon, Wednesday, 4th April 2007.

## **HIGH STREET GARDEN**

We are still unsure when the High Street garden will open. The solicitors are drawing up the legal agreement, the wording of which has been approved. We are in their hands and continue to press them for completion.

## **PARISH CENTRE**

Despite an officer recommendation to approve the Parish Centre, which is to replace the Youth Club on South Common, was rejected at Plans North by one vote. We were obviously disappointed by this decision as many hours had been spent with the Conservation, Planning and Highways Officers to ensure the application met their approval. Our architect is to lodge an appeal and also submit a revised application.

## **ACTION DAY**

Saturday, 24th February - 10 to 4pm  
Concourse, Harpenden (outside Argos/Boots)

Harpenden Town Council is holding an action day to raise awareness of plans to build at least 83,200 houses in Hertfordshire's Green Belt

## **PARISH COUNCIL MINUTES**

A copy of the Parish Council minutes is distributed to various roads in the village with a request that once these are read they are passed onto the next door neighbour. If you are not receiving a copy, but would like to do so, please inform the Clerk. We would also like some feedback on whether you find the minutes informative and would like to continue receiving them.

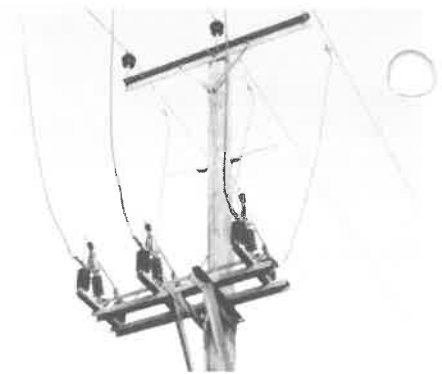
## EDF ENERGY

EDF Energy Networks sincerely apologises to customers in the Redbourn area who have been experiencing a number of power interruptions over the past months. A significant number of interruptions have been directly attributable to the faulting of overhead circuits. The cause of these interruptions have been varied, from windborne debris and third party damages to equipment failure. Power lines are exposed to the natural elements and therefore more susceptible to interference or damage resulting in a loss of supply.

However, EDF Energy Networks recognises the number of incidents experienced by Redbourn residents is unacceptable. Following similar issues in 2005 EDF Energy Networks commissioned an extensive survey of the overhead network in the Hemel Hempstead, Harpenden and Redbourn areas. Early last year a proposal was put forward to refurbish and replace a significant number of overhead assets within the Redbourn area valued at approximately £100,000. Further to this initial proposal and part of EDF Energy Networks' five-year, multi-billion-pound capital investment programme, an additional two overhead circuits were submitted for approval in the middle of last year.

EDF Energy Networks is pleased to inform residents of Redbourn all of these proposals have been approved. The replacement/refurbishment of approximately 30km of overhead assets with nearly £500,000 of capital investment is planned to start on February 25. It is expected that these works will significantly improve the quality of supply in and around the Redbourn area. However, there will be a number of planned interruptions to allow these improvements to take place and EDF Energy Networks will be providing residents with at least seven days' notice if their power supplies are to be affected. Supply to essential community services such as schools, hospitals and those residents included on the EDF Energy Networks vulnerable customer register will be supplemented by temporary generation.

EDF Energy Networks intends to work closely with Redbourn residents and the parish council to ensure the smooth completion of this and future projects.



## THE PARK

We are pleased to report that after many months of campaigning Hertfordshire Highways finally agreed that the section of road in The Park, from the entrance to the end of the Youth Club is now adopted. The road has, at long last, been resurfaced.

### PRE SCHOOL AND NURSERY FOR TWO, THREE AND FOUR YEAR OLDS

Is your child three or four years old? If so, you can get a free or funded place in a pre-school, a state nursery school or class, or a private nursery. A two year old child may be able to get a free or funded place in a pre-school or private nursery, depending on your income

A free session normally lasts 2.5 hours; you have to pay for a longer session.

For more details phone Young in Herts 01438 737502 or 01923 471502, email [younginherts@hertscc.gov.uk](mailto:younginherts@hertscc.gov.uk) or visit the website at [www.hertsdirect.org/younginherts](http://www.hertsdirect.org/younginherts)

## BUDGET

The Parish Council has set its budget for the coming year at £118,278. £7,200 of this will be funded through interest and the precept (the amount claimed through council tax) will be £111,078 which is an increase 4.9% or, when averaged over households, taking into account the increased number of houses built over the past year, 4.4%

The budget is allocated as follows

Administration	£54,038
Commons	£30,212
Dilapidations	£7,000
Revenue Grants	£7,800
Capital Grants	£19,200

## LITTER PICK - 24TH MARCH 2007

Meet outside Village Hall at 10am

Help improve the environment by clearing an unsightly area - Litter picks and black sacks provided

A number of complaints have been received regarding the standard of cleanliness in the village. If you are not satisfied with the standard of cleanliness in your road please write to the Clerk (address on page 4). We will collate letters and forward them onto the District Council, the body responsible for street cleaning.