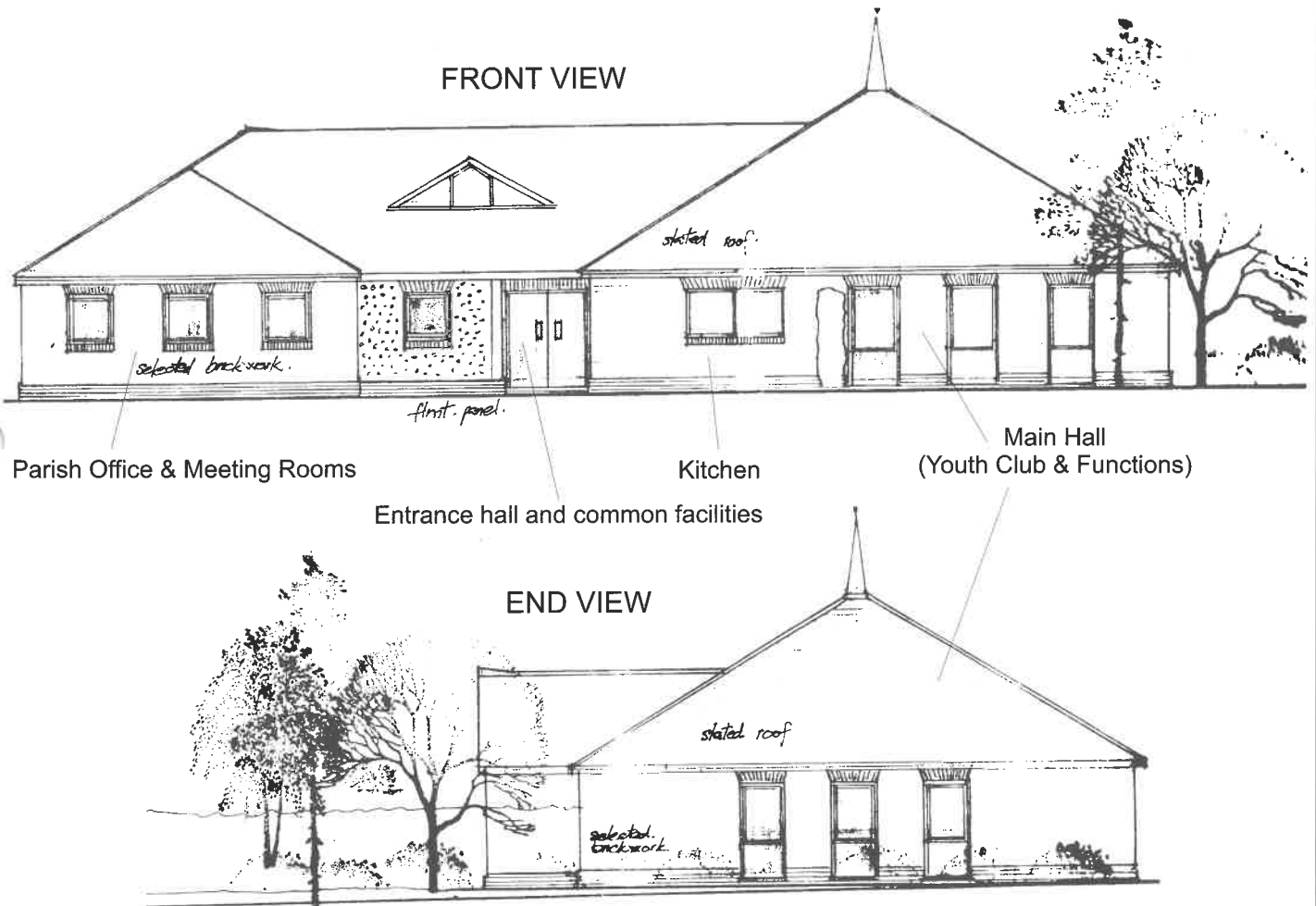




## PARISH CENTRE IDEAS TAKE SHAPE



Above are architect's sketches for the Proposed Parish Centre on the site of the old Youth Centre (by Courtesy of Cannon, Morgan & Rheinberg).

The exact location and orientation on the site are still under discussion, but the basic design and internal layout have been approved by the Parish Council. The design provides a Main Hall, Kitchen, Meeting Rooms, Toilets, and a permanent office for the Parish Clerk. It is expected that the Youth Club will use the Hall one or two evenings a week, and the main meeting room will be used for Parish Council meetings, but at other times these will be available for other functions. These include use by Village organisations, private hire, one-stop-shop for Council matters, surgeries by local MPs, and local government officers etc.

### REDBOURN in BLOOM EVENTS

**HANGING BASKETS EVENT** at **GODLY'S ROSES**  
7.30pm Wednesday 24th May  
Glass of Wine and Raffle  
Bring your own basket or buy on the night

**LOCAL COMPETITION**, including **Best Front Garden**  
End of June, lookout for posters/leaflets.  
**OPEN GARDENS WEEKEND** - 15/16th July  
for details, Contact Rita Green 626452.

For more information visit the village website [www.redbourn.org.uk](http://www.redbourn.org.uk). Here you can view Council agendas and minutes and send your comments. The website is full of useful information about life in the village. It includes advice about clubs and societies, local birdlife, walks, events, history and so much more. If you wish you can attend our meetings, which are held on the third Thursday of the month at 7.30pm in the Village Hall. (December's meeting is held on the second Thursday of the month). Meetings of the Common Footpaths and Open Spaces are held on the first Thursday of the month.

## NEW POINTS SCHEME FOR COUNCIL HOUSING

Recently the lettings team has reviewed the points scheme that they use to prioritise cases. You may be aware that most points are given to reflect problems with the applicant's housing conditions. The more points the worse the accommodation and the greater their need for housing.

New points awards have been added to reflect more difficult housing conditions.

If you believe you are entitled to these points please write to the Rehousing Team at the address given below, and provide any relevant evidence to support your claim.

### What are the changes to the points scheme?

#### Children Sharing Rooms

- |           |  |
|-----------|--|
| 5 points  | if three or more children have to share one room,                    |
| 5 points  | if a child has to share with a parent                                |
| 10 points | if a child has to share with someone who is not a parent or sibling. |

These points will be awarded based on the best use of the accommodation, not necessarily how you choose to use the space available.

#### Negative Factors

Negative points can be awarded for antisocial behaviour, arrears (former or current) and financial resources available to the applicant. Negative points can now be awarded in accordance to the level of seriousness at three levels: -15, -25 and -40.

#### Distance from schools

5 points can be awarded for distance from school for both Housing Register and Transfer applicants. The points are available if your children attend school in the district and if you have a child below eight living more than two miles from school or child between eight and sixteen living over three miles from school.

Rehousing  
The Housing Department  
Civic Centre  
St. Albans  
Herts.  
AL1 3JE

Phone: 01727 819480, or 01727 819262  
email: rehousing@stalbans.gov.uk

## Important Information for Council or Housing Association Tenants

All tenants living in a Council or Housing Association Property enter into an agreement with the landlord. Over time circumstances may change. Other people, be they relatives, carers, or companions may enter the household. If they help towards paying the rent and household expenses they may think that this gives them succession rights if the official tenant dies or is taken into residential care.

This may not be the case as the law on succession and assignment is complex and is dependent on many factors. If you are a carer, companion, or living with elderly parents you should check on your legal status with the District Council. The conditions of tenancy are contained in the District Council website and in the tenancy handbook.

Act now! If something should happen to the official tenant, and your position is not secure, you could find yourself facing eviction. Do not wait until it is too late. Make sure your position is safeguarded now.

## LAUNCH OF FRIENDS OF THE NICKY LINE

Following the packed public meeting of 14 March chaired by Harpenden Mayor Clennel Collingwood on the future of the Nickey (Nicky) Line, a new local support group Friends of the Nickey Line will be formally launched at a second public meeting in

**Harpenden Park Hall**

**at 7.30 Thursday 18 May.**

Local residents and Nickey Line users are invited to approve the constitution of the new group and elect a committee. The latest formal Nickey Line Management Plan will be presented and discussed by Countryside Management Service.

## SCOUT FETE

**Saturday, 17th June, 2006,  
Redbourn Common**

If you are able to help on the day please contact Geoff Woodhouse, Scout Fete Organiser, 01582 792668

## BEATING OF THE BOUNDS

SUNDAY, 21st MAY 2006  
at 8.45am

Meeting point:  
Harpenden Lane Roundabout

Enjoy the beautiful views of the Redbourn  
countryside!

*Don't feel you have to walk the whole route  
(approximately 15 miles).*

*Many people join (or leave) the walk at St Mary's  
Church at 11.15am when a stop is made for  
refreshments.*

*From Harpenden Lane to St Mary's is 5 miles. Bring  
a packed lunch if you decide to "go for broke".*

The complete walk takes all day and ends at  
approximately 5pm at the Chequers Roundabout

*Organised by Redbourn Parish Council*



## Summer Events at Redbourn Museum

**Sunday June 18<sup>th</sup>**  
Redbourn in Steam

Visiting steam traction engines and road rollers  
Engines in steam from 11.00 am to 3.00 pm  
Exhibition by: St. Albans Model Engineering Society  
Bring your Dad as a Fathers' Day Treat!

**Weekend of July 1st & 2nd**  
Redbourn in Stitches Exhibition and Sale of Work  
Featuring demonstrations as well as  
the new display about the  
Millennium Wall Hanging in the Ann Skillman Gallery.  
Refreshments available

Your village museum is on **The Common,**  
next to **The Cricketers**  
and is open every weekend.  
**Saturdays (2-5pm) and Sundays (12-5pm)**  
Entry £1 adults, 50p children and Friends of the  
**Museum**

Also, why not join us on for our annual coach outing?  
**Thursday June 22<sup>nd</sup> 2006**

Greenwich Maritime Museum, Royal Observatory and Park.  
We leave Redbourn at 9.15 am and travel by coach to  
central London, then by boat down the Thames.  
There are many attractions and ample free time to  
visit the Georgian Town Centre of Greenwich itself.  
Returning to Redbourn in the early evening.  
Tickets at £20 each are available from  
Peter Hildebrand on 01582 794175

## Winning Entries for Redbourn in Bloom Poster Competitions.

Above: Open Gardens Weekend by Adrian Fisher (St. Lukes)

Below: Hanging Basket Event by Cameron Oak (Infants School)



## NEIGHBOURHOOD WATCH MEETING

7th June - 7.30pm

The time is right for our Neighbourhood Watch volunteers to meet again and remind ourselves what a good job we are doing! Although many roads in Redbourn are covered by a NW scheme, there are still some who need encouragement. With both these things in mind, we have booked **St Luke's School on Wednesday 7th June at 7.30**, so please spread the word, whether you are an active coordinator, or new to NW and interested in starting your own scheme. It's a great opportunity to see how others run their own schemes and share experience, as well as a forum for questions and pleas for help!

Also attending will be our local PC, PCSO, and Sergeant, (duties allowing), as well as our Watch Liaison officer, and the Chair of Hertswatch. I am hoping there will be a sneak preview of OWL, the new web based replacement for Ringmaster, which should revolutionise NW communication.

The police are also holding a regular meeting in the village with NW representatives, housing associations, parish councillors, etc, with a view to creating a problem solving forum, which is all part of a much wider initiative by the police to reinvigorate NW and foster community spirit. Please get in touch with me directly if you have any issues you would like to raise, or if you would just like to attend and see what is happening.

Hope to see you all on the 7th.

Rob McIntosh.

Redbourn NW Representative.

macsmac@mwfree.net

### REDBOURN ELECTION RESULTS

Results for the Redbourn ward of St. Albans City & District Council were as follows:

|                                |       |
|--------------------------------|-------|
| Susan Carr (Conservative)      | 1039  |
| Edward Hill (Labour)           | 138   |
| Ann Manning (Liberal Democrat) | 745   |
| Gregory Riener (Green Party)   | 126   |
| Turnout                        | 44.8% |

### DATES FOR YOUR DIARY

(see separate articles for details)

18th May - Friends of the Nickey Line (p2)

21st May - Beating the Bounds (p3)

24th May - Hanging Basket Event (p1)

7th June - Neighbourhood Watch (p4)

16th June - Village of the Year Judging

17th June - Scout Fete (p2)

18th June - Redbourn in Steam (p3)

End of June - Redbourn in Bloom local Competitions(p1)

1st/2nd July - Redbourn in Stitches (p3)

15/16th July - Redbourn in Bloom Open Gardens (p1)

## YOUR REPRESENTATIVES

### Beaumont Ward

Christine Cardy  
16 Cumberland Drive 01582 794744

James Lowen (Chairman Finance)  
2 Mulberry Place - 01582 794039

Maria Maynard  
2 High Street

Colin O'Donovan (Chairman Commons)  
7 Ver Road - 01582 792382

Ron Stent  
10 Saberton Close - 01582 793151

Tony Swendell  
6 Monks Close - 01582 792076

### Nicholls Ward

Anthony Bull (Chairman)  
10 Crouch Hall Gardens - 01582 793756

Kevin Maidment  
Scout Farmhouse, Dunstable Road - 01582 794259

Stan Pierpoint  
4 Wheatlock Mead - 01582 792117

Philip Rosen (Chairman Planning)  
34 Bettespol Meadows - 01582 792585

Pat Schofield  
82 The Park - 01582 793096

Vivienne Windle  
1 Coopers Meadow - 01582 626351

### Parish Clerk

Diane Whiskin  
Village Hall, 63 High Street Redbourn AL3 7LW  
01582 794832

### District Councillors

Colin O'Donovan, Tony Swendell  
(Addresses etc. as above)  
Susan Carr  
103 Dunstable Road - 01582 794475

### County Councillor

Derek Hills  
01582 629433

### Member of Parliament

Rt Hon Peter Lilley  
01582 834344

It is intended that REDBOURN news will be printed quarterly. If there are any subjects you would like to see in the newsletter or if you have an article/letter you would like published please write to the Parish Clerk Diane Whiskin, or e-mail redbournpc@talk21.com



# Redbourn Parish Travel Plan

## Exhibition Feedback

May 2006

Further to the previous newsletter we issued in March 2005, Hertfordshire Highways together with the Redbourn Parish Travel forum developed solutions to problems and issues identified in the travel survey. Exhibition leaflets were delivered to every household in the parish inviting residents and local businesses to give their views on these proposals. The exhibition displaying the proposals was held at Redbourn Village Hall on Friday 27<sup>th</sup> and Saturday 28<sup>th</sup> January 2006. The solutions had various options that were displayed in detail at the exhibition. The main areas considered were the High Street, High Street/Fish Street junction, Lybury Lane and a crossing on Hemel Hempstead Road.

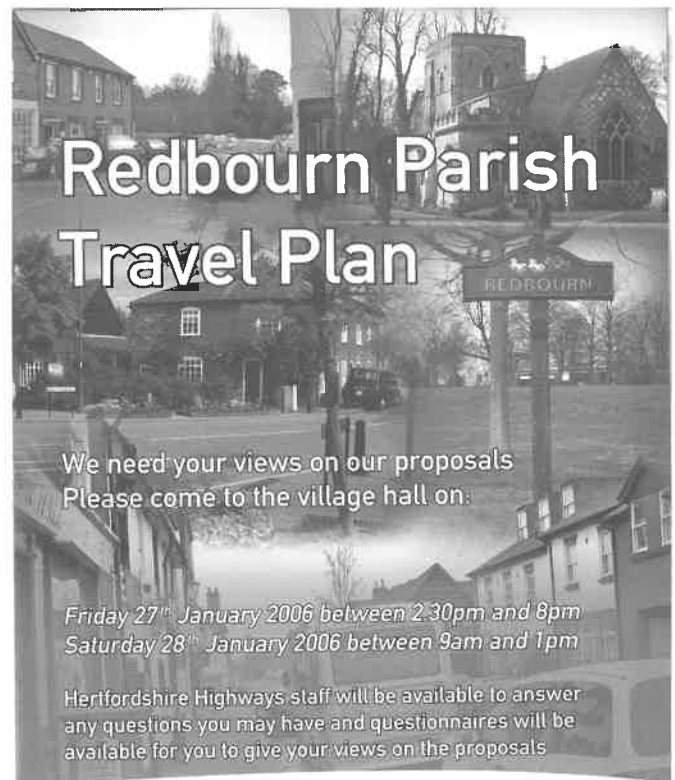
There was a very good turn out at the exhibition with 371 questionnaires being returned and processed. A total of 882 comments were received on all the proposals. The questionnaires and comments were analysed and the results are discussed in this newsletter.

### Questionnaire Feedback

Thank you for attending the exhibition and filling in the questionnaires. Your responses have enabled us to gain a feeling of what residents in Redbourn think of our proposals.

### Exhibition Feedback

This newsletter shows the results of the public exhibition and describes how Hertfordshire Highways will now work to deliver what you, the residents of Redbourn, have asked for.



Hertfordshire Highways  
[www.hertsdirect.org/highways](http://www.hertsdirect.org/highways)

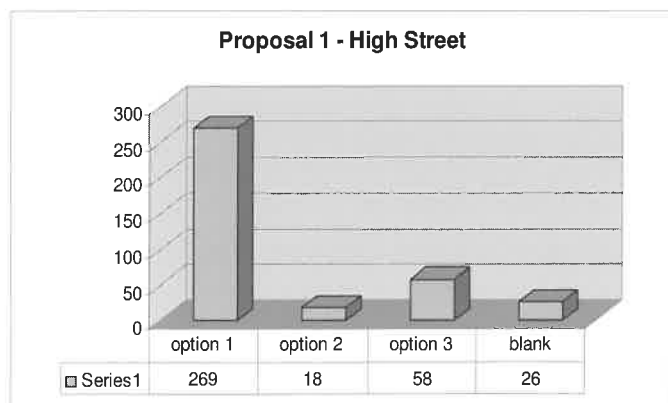


For the most up to date information on the project, keep an eye on the Parish Council notice board, as well as the Library, Post Office, Redbourn Hardware Stores, Marsh Butchers, Hall butchers.



## Proposal 1 - High Street

The High Street was highlighted as a problem area, and the proposals were developed to reduce congestion and help solve parking problems in the High Street. It was a difficult challenge to address due to the variety of people who use the High Street eg shoppers, business workers and residents.



The options were :

**Option 1** - Change parking restrictions - single yellow line on one side of the High Street and increase existing time limit of bays from 1 hour to 2 hour stays

**Option 2** - Remove all parking restrictions

**Option 3** - Do nothing

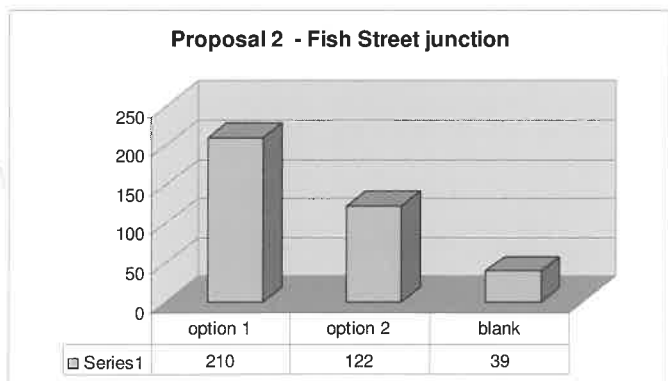
**Blank** - People who did not indicate a preference

**Comments** - 206 comments regarding the High Street proposals

The graphic shows that option one was the most popular option. 72% of the respondents indicated that implementing parking restrictions was their preference. After reading the comments regarding the High Street, it was decided by the forum that restrictions should be 8.30am to 5 pm. There will be signs highlighting the parking available in Dunstable Road. In addition Herts Highways will be looking at parking restrictions around the Pondsmeade junction. Many people were concerned about the enforcement of the parking restrictions, so St Albans District Council will be asked if parking attendants could visit the area regularly.

## Proposal 2 - Fish Street junction

The Fish Street junction is situated on an awkward bend with buildings close by which reduces visibility. The aim of the proposal was to improve safety at this junction.



The options were as follows;

**Option 1** - Priority change

**Option 2** - Do nothing

**Blank** - People who did not indicate their preference

**Comments** - 175 comments regarding Fish Street

As you can see from the graphic above the majority 210 people (56% of respondents) would like the priority to be changed. 32% would prefer to keep it as it is at the moment.

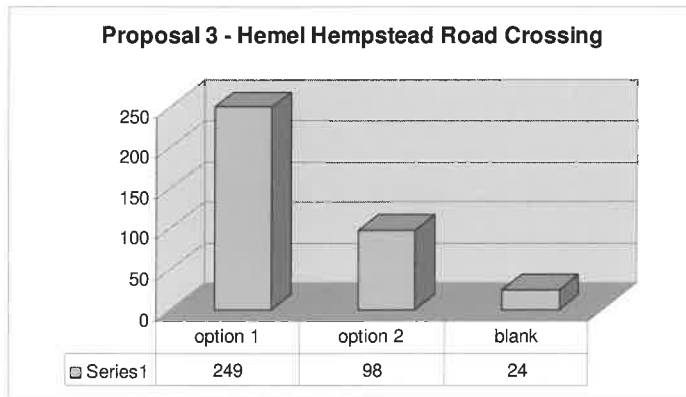
However after analysing the comments, it was decided within the forum group that the priority of the junction should be kept as it is at the moment; the road markings should be renewed and parking removed from the approaches to the junction. This arrangement will be monitored and if the situation does not improve the priority may be changed in the future.



For the most up to date information on the project, keep an eye on the Stores, Marsh

### Proposal 3 - Pedestrian crossing on Hemel Hempstead Road

The aim of this proposal is to improve the safety of pedestrians, especially school children using this route. A zebra crossing was proposed with the associated signing and road markings.



The options were as follows;

**Option 1** - Installation of a zebra crossing

**Option 2** - Do nothing

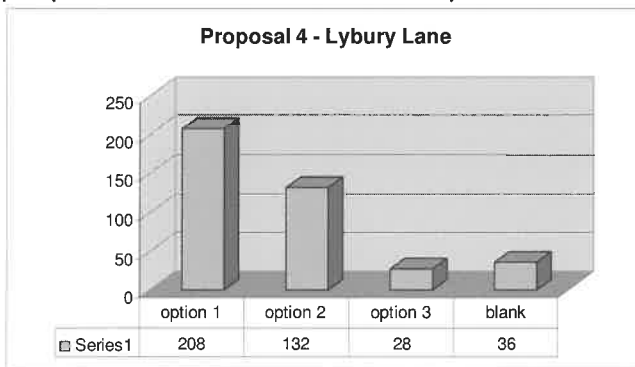
**Blank** - People who did not indicate their preference

**Comments** - 157 comments received

The graphic shows that 249 people (67% of respondents) were in favour of the zebra crossing and 98 (26% of respondents) preferred no change. Some of the comments were concerned about the positioning of the crossing but Herts Highways have met with Police, Parish Council representatives and the Area team and it was agreed that the location shown at the exhibition is the most appropriate in this area. There were also concerns over the urbanisation around the common due to the additional lighting required for the zebra crossing. To address some of the issues, the flashing beacons will be tunnelled and heritage style lighting columns will be used.

### Proposal 4 - Lybury Lane

Despite Lybury Lane being mainly residential, the speeds are high on this road. The aim of this proposal is to address these speeds; it also includes options to make the bend safer.



The options were as follows;

**Option 1** - Raised junction tables

**Option 2** - Vehicle activated signs

**Option 3** - Do nothing

**Blank** - People who did not indicate their preference

**Note:** 33 people wanted both junction tables and vehicle activated signs so of the 208 on option 1, 33 are both and of the 132 in option 2 33 are both.

**Comments** - 170 comments regarding Lybury Lane

As you can see from the graphic 208 people, (51% of respondents) preferred option one, 132 people (32% of respondents) wanted VA signs. About 8% of respondents wanted both junction tables and VA signs but this is not feasible as the humps will slow people and then VA signs would not be needed. The forum group asked Herts Highways to look into extending the humps up to the Tassell Hall estate and this will be investigated.

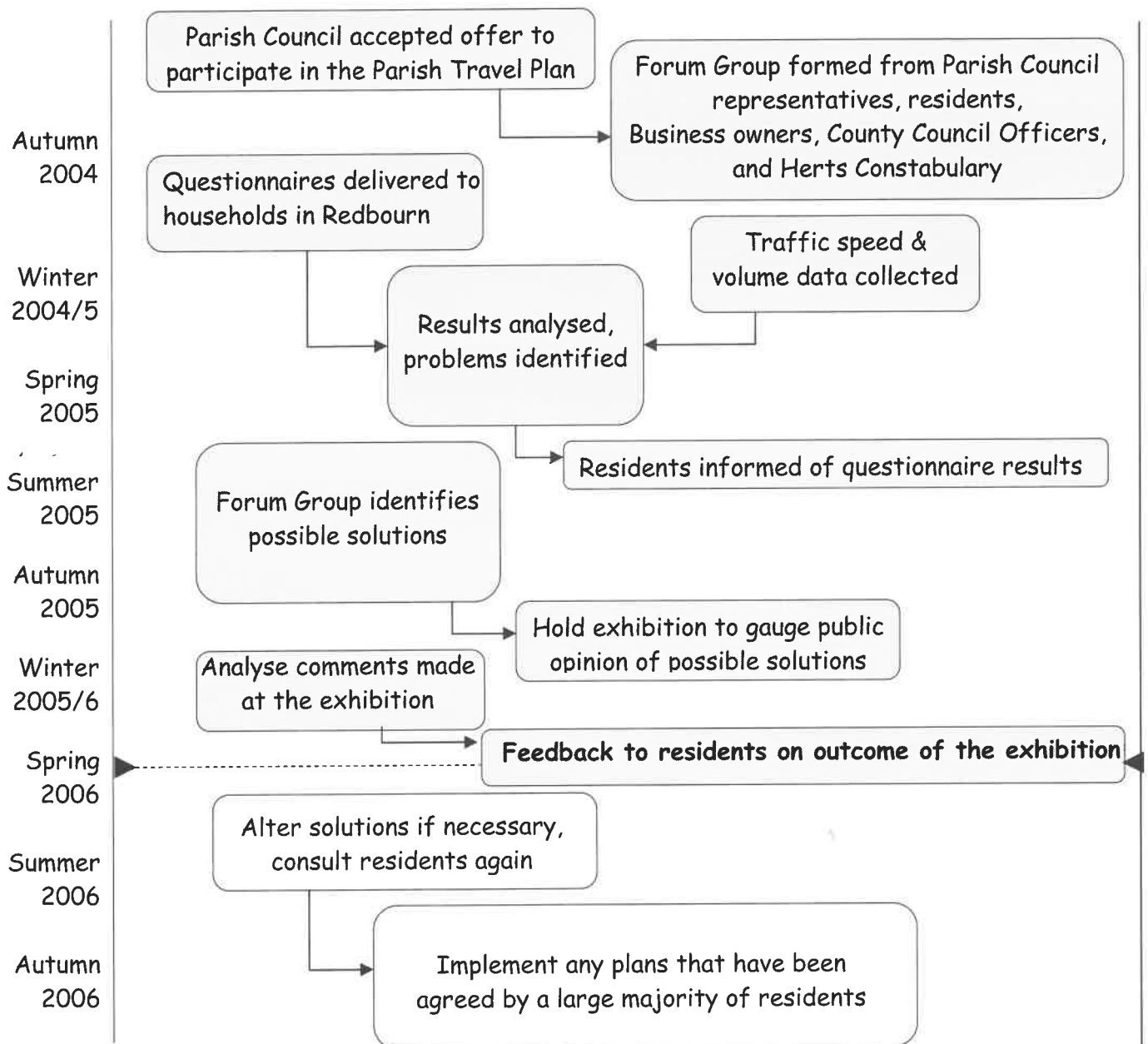
### What happens next?

Hertfordshire Highways will now proceed with the detailed design of the favourable options, and the legal processes that will allow the work to take place will also start now. Herts Highways will contact residents, where necessary, as we develop our designs for the proposals.



## Progress Report

Below is a brief summary of what has happened so far, where we are now, and how we aim to progress.



### Contact Details

If you would like more information about the Redbourn Parish Travel Plan, or would like to get involved, please contact any of the following people:

|                   |              |  |
|-------------------|--------------|--|
| Magedie Pretorius | 01707 356271 | <a href="mailto:magedie.pretorius@hertshighways.org.uk">magedie.pretorius@hertshighways.org.uk</a> |
| Natalie Jantjies  | 01707 356273 | <a href="mailto:natalie.jantjies@hertshighways.org.uk">natalie.jantjies@hertshighways.org.uk</a>   |
| Sarah Pollard     | 01707 356267 | <a href="mailto:sarah.pollard@hertshighways.org.uk">sarah.pollard@hertshighways.org.uk</a>         |

Or you can write to us at: Village Travel Plans  
Hertfordshire Highways  
Highways House  
41-45 Broadwater Road  
Welwyn Garden City  
Herts  
AL7 3SP

\* For the most up to date information on the project, keep an eye on the Parish Council notice board, as well as the Library, Post Office, Redbourn Hardware Stores, Marsh Butchers, Hall butchers. \*